



ROMLAIR

9668-D Heinrich Hertz Drive, San Diego, CA 92154
PH: 619-946-1224

**MODEL RPV
PENTHOUSE GRAVITY VENTILATOR**

INSTALLATION AND MAINTENANCE INSTRUCTIONS

This publication contain the installation, operation and maintenance procedures for standard units of the Romlair Model RPV gravity ventilators

Romla Ventilator Company catalog RPV-89 provides additional information describing the equipment, performance, available accessories and specification data.

For additional safety information, refer to AMCA publication 410-96, *Safety Practices for Users and Installers of Industrial and Commercial Fans*.

All the publications listed above can be obtained from Romla Ventilator Company by phoning 619-946-1224; by Fax 619-946-1227

RECEIVING AND INSPECTION

Carefully inspect the unit for any damage and shortage immediately upon receipt of the unit and record on the Delivery Receipt any visible sign of damage.

HANDLING

Lift the unit by the base or shipping carton. Never lift by the tiers.

OVERSIZED UNITS

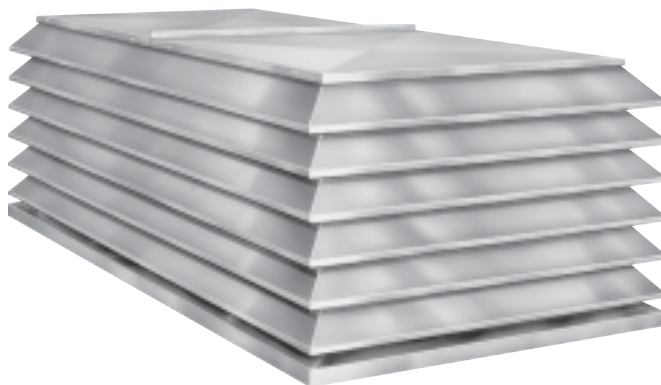
Very little field assembly is required on multi-section units. See page 2 for instruction details.

STORAGE

If the unit is stored for any length of time prior to installation, store it in its original shipping crate and protect it from dust debris and the weather.

FILTERS-OPTIONAL

The filters are mounted vertically behind the louver sides. For access to the filters simply remove or slide back the RPV hood top. This is done by unfastening the hood hold down clips Slide the filters up and out of the filter channels. Be sure to reinstall all top cap fasteners upon re-assembly.



Filter inspection and cleaning intervals can vary from once a week to twice per year depending on contaminant present and acceptable pressure drops across the filter. Under most conditions filters may be cleaned with hot water and a mild soap solution (such as dish washing liquid) or steam. Some caustic cleaners will damage the filters.

High pressure spray washers should be limited to 2000 psi operating pressure. Every attempt should be made to remove the contaminants from the filter in a "backwash" flow. Once the filter is dry, it may be returned to the appropriate filter racks in the same orientation (airflow direction) as they were removed.

MAINTENANCE

Establish a definite schedule per the manufacturer's recommendation for inspecting any accessory filters or damper units that may have been installed with the ventilator. Inspect the ventilator yearly for any debris that may obstruct airflow. Check exterior surfaces for dust and grease. To assure proper operation, remove any dust and grease from the RPV surfaces.

INSTALLATION INSTRUCTIONS ON MULTI-SECTION UNITS

On very large units it is necessary to ship in multiple sections to facilitate shipping. The units require very little assembly joining the units together on the roof.

Mount the units side by side on the roof curb. Fasten together with furnished nuts and bolts using the pre-punched holes in the louver end plates. See Figure 1. The hood panel is shipped loose where the sections come together. After the sections are bolted together, place the hood panel in place as shown in Figure 2



Figure 1



Figure 2

After the hood section is in place, use vice grips to clamp and hold the seam in place so that you can secure with the tek screws provided.

Using the provided tek screws place fasten about 3/4 in from the seam on each side. Fasten location same as other hood panels already installed. See Figure 3 for illustration



Figure 3

The last step is to install 4 tek screws on the down flange of the hood seam. Place tek screws in the same location as on all the other hood seams. See Figure 4



Figure 4