

MODEL RCF-SI

Romlair Model RCF-SI Side Intake Filtered Air Supply Fans – Fresh air supply fan designed to meet NFPA 96 separation requirements between supply and exhaust air flows in restaurant applications.

Side Intake Filtered Air Supply Fans

CONSTRUCTION FEATURES

- DWDI Forward Curved Blower – Operate at low RPW for quiet operation.
- Cabinet Housing - Constructed of galvanized steel – mill finish.
- Motors – Heavy duty type with permanently lubricated sealed ball bearing. Available with totally enclosed fan cooled (TEFC), or open drip proof (ODP)
- Variable Pitch Drives To 7-1/2 Hp – Adjustable for final system RPM. Belts sized for 165% of driven Hp. Belts are oil and heat resistant, non-static type. Drives are cast iron type, keyed and securely attached to the wheel and motor shafts.
- Easy Access – Latched top cover allows easy access for servicing the blower, motor, and drives.
- Insulated Top Cover – 1/2" insulation under the top cover minimizes condensation.
- Heavy Duty Ball Bearing – With an operating temperature range of – 65 to +250 F. Bearings are permanently lubricated, sealed ball type.
- Rubber Mounts – Entire fan and motor assembly is mounted on rubber mounts to prevent noise transmission into the building.



1" Washable Aluminum Filters – the filters are located in the side intake hood on sizes 9" thru 18". On size 20" the intake has a drawer type filter section between the cabinet and the hood (not illustrated).

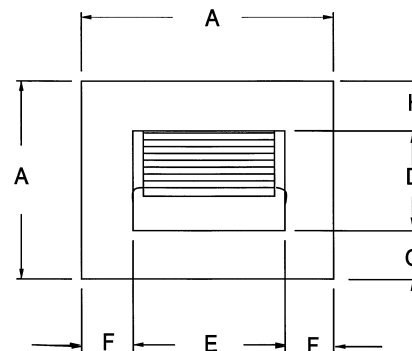
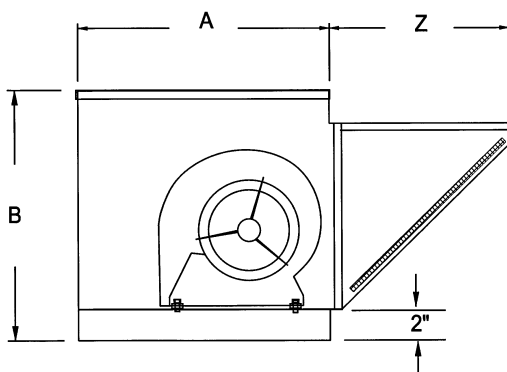
FAN SIZE	FILTER SIZES
9	(1) 16 X 25 X 1
10	(2) 15 X 20 X 1
12	(1) 16 X 25 X 1 (1) 20 X 25 X 1
15	(2) 20 X 28 1/2 X 1
18	(2) 16 X 25 X 1 (2) 20 X 25 X 1
20	(6) 20 X 25 X 1

Romla also offers other filtered air supply fans. See Model RCF, RCF-T & CLS

MODEL RCF-SI
PERFORMANCE DATA

MODEL	CFM	OUT. VEL FPM	CUBIC FEET PER MINUTE AND HORSEPOWER AT STATIC PRESSURE																	
			1/4" SP			1/2" SP			3/4" SP			1" SP			1-1/2" SP			2" SP		
			RPM	BHP	SONE	RPM	BHP	SONE	RPM	BHP	SONE	RPM	BHP	SONE	RPM	BHP	SONE	RPM	BHP	SONE
RCF-SI – 18 MAX. HP – 5 WHEEL DIA 18.19" TIP SPEED 4.76 x RPM SHAFT 1"	3000	1046	334	0.36	9	436	0.59	11.7	550	0.96	18.7	633	1.25	23	762	1.77	29	868	2.35	35
	3250	1133	345	0.42	10.2	439	0.66	12	545	1.01	18.1	635	1.38	23	768	1.96	30	875	2.54	36
	3500	1221	356	0.49	11.3	446	0.74	12.9	537	1.05	17.1	635	1.49	23	773	2.16	30	881	2.76	37
	3750	1308	367	0.56	12.3	455	0.84	14	534	1.11	16.8	629	1.56	22	776	2.35	31	887	3.02	38
	4000	1395	378	0.65	13.2	464	0.93	15.1	538	1.22	17.2	621	1.6	21	778	2.54	31	891	3.28	38
	4250	1482	390	0.75	14.4	473	1.03	16.2	545	1.35	18.1	616	1.67	21	778	2.72	31	895	3.54	39
	4500	1569	402	0.85	15.4	484	1.14	17.7	554	1.49	19.2	619	1.81	21	774	2.84	31	898	3.79	40
	4750	1657	416	0.97	16.8	494	1.27	19.1	562	1.62	20	625	1.96	22	765	2.9	29	899	4.04	40
	5000	1744	429	1.11	18.2	505	1.4	20	572	1.77	21	633	2.14	23	758	2.98	28	898	4.27	40
	5250	1831	443	1.25	19.5	516	1.56	22	581	1.92	23	641	2.33	24	754	3.1	28	891	4.39	38
	5500	1918	457	1.41	21	527	1.72	23	592	2.09	24	650	2.51	25	758	3.31	28	883	4.48	37
	5750	2005	741	1.58	22	539	1.9	24	602	2.28	25	659	2.7	26	764	3.54	29	875	4.58	36
	6000	2093	486	1.77	24	551	2.1	25	613	2.47	286	669	2.91	28	771	3.8	30	871	4.72	35
	6250	2180	501	1.97	25	563	2.31	26	624	5.69	28	679	3.13	29	779	4.07	31	873	4.97	35
	6500	2267	516	2.18	27	576	2.54	28	635	2.93	29	690	3.36	31	788	4.35	33	-	-	-
	6750	2354	531	2.42	28	589	2.79	29	646	3.18	31	700	3.62	32	796	4.63	34	-	-	-
	7000	2441	547	2.67	29	603	3.05	31	658	3.45	32	711	3.89	34	806	4.92	36	-	-	-
	7250	2529	562	2.93	31	617	3.33	32	670	3.74	33	722	4.19	35	-	-	-	-	-	-
	7500	2616	578	3.21	32	631	3.63	34	682	4.05	35	733	4.5	36	-	-	-	-	-	-
	7750	2703	594	3.52	34	645	3.95	35	695	4.38	36	744	4.84	38	-	-	-	-	-	-
8000	2790	310	3.84	36	659	4.28	37	708	4.72	38	-	-	-	-	-	-	-	-	-	
8250	2877	626	4.18	38	674	4.64	39	-	-	-	-	-	-	-	-	-	-	-	-	
8500	2964	642	4.54	39	-	-	-	-	-	-	-	-	-	-	-	-	-	-	-	
RCF-SI – 20 MAX. HP – 10 WHEEL DIA 20.44" TIP SPEED 5.35 x RPM SHAFT 1-3/16"	5000	1175	374	0.85	12.1	444	1.18	13.9	514	1.53	16.7	581	1.92	19.9	701	2.8	26	798	3.65	31
	5500	1293	397	1.06	13.9	462	1.41	15.6	525	1.78	17.9	588	2.19	21	706	3.11	27	806	4.08	32
	6000	1410	419	1.31	15.6	482	1.69	17.5	540	2.08	19.5	598	2.5	22	711	3.45	27	812	4.72	34
	6500	1528	442	1.58	17.5	504	2	19.7	557	2.42	21	610	2.85	23	717	3.83	28	817	4.92	34
	7000	1646	465	1.91	19.5	526	2.36	22	576	2.8	23	626	3.26	24	725	4.26	29	821	5.38	35
	7500	1763	488	2.27	21	548	2.76	24	597	3.24	25	643	3.72	26	735	4.75	30	827	5.89	36
	8000	1881	513	2.69	24	571	3.21	26	618	3.72	27	662	4.23	28	748	5.29	31	836	6.46	37
	8500	1998	537	3.15	26	594	3.71	28	641	4.25	29	683	4.79	30	764	5.9	33	845	7.09	38
	9000	2116	563	3.68	28	616	4.26	30	663	4.84	31	704	5.41	32	781	6.57	36	857	7.79	40
	9500	2233	588	4.26	30	639	4.86	32	686	5.49	33	726	6.09	35	800	7.3	39	872	8.56	42
	10000	2351	614	4.91	32	662	5.53	34	709	6.19	36	748	6.83	37	819	8.1	41	888	9.4	45
	10500	2468	641	5.62	35	686	6.26	36	731	6.95	38	771	7.63	40	840	8.96	44	-	-	-
	11000	2586	667	6.4	37	710	7.06	39	753	7.78	41	794	8.51	43	861	9.89	46	-	-	-
	11500	2703	694	7.26	40	734	7.93	41	776	8.68	43	816	9.44	46	-	-	-	-	-	-
	12000	2821	720	8.18	43	759	8.88	44	799	9.65	46	-	-	-	-	-	-	-	-	-
12500	2938	747	9.19	46	784	9.91	47	-	-	-	-	-	-	-	-	-	-	-	-	

Romla Ventilator Company certifies that the fan performance shown have been tested and rated in accordance with AMCA publication 211 and are guaranteed by the manufacturer to deliver rated performance.

MODEL RCF-SI
DIMENSIONAL DATA


SIZE	A	B	D	E	F	G	H	Z	INSIDE CABINET	WT	SIZE	A	B	D	E	F	G	H	Z	INSIDE CABINET	WT
9	24.38	19.38	10.25	11.81	6.28	7.06	7.06	21.5	24 x 24	79	15	36.38	28.38	15.88	18.63	8.5	7.75	12.31	33.5	36 x 36	192
10	28.38	21.38	11.36	13.12	7.63	8.50	8.12	25.75	28 x 28	99	18	36.38	42.5	18.88	21.88	7.25	6	11.5	40.25	36 x 36	308
12	32.38	24.63	13.44	15.63	8.06	9.38	9.38	30.75	32 x 32	131	20	44.38	49	24.75	24.75	9.81	14.44	5.18	45.5	44 x 44	605

ACCESSORIES

- **ROOF CURBS** – Curbs are welded 18 gauge, galvanized steel: available as self-flashing type (Type SF) or as Roofed-Over-Flashing type with built in cant strip and wood nailer (Type CF). For Type CF curb dimensions refer to the following dimensions: Vented roof curbs are available to meet the NFPA 96 requirement for a 40" discharge height with the upblast roof exhaust fan.

TYPE OF DIMENSIONS			
SIZE	O.D. CURB DIM.	SIZE	O.D. CURB DIM.
9	22-1/2 x 22-1/2	15	34-1/2 x 34-1/2
10	26 1/2 x 26-1/2	18	34-1/2 x 34-1/2
12	30-1/2 x 30-1/2	20	42-1/2 x 42-1/2

- **DUCT ADAPTERS** – The duct adapter fits over the roof curb to facilitate the installation of ductwork before the fan is placed on the roof curb.
- **BACKDRAFT DAMPERS** – Model RBDS counterbalanced intake dampers (downflow) for horizontal mounting inside ductwork. For Motorized Operation Model RVC intake dampers are recommended.
- **DISCONNECT SWITCHES** – The following switches are available. They are factory mounted non-wired. Optionally, wiring from the motor to the disconnect box can be provided. NEMA 1 – Indoor general purpose, NEMA 3R – Exterior mount, rain-tight, NEMA 4 water-tight and dust-tight.
- **INTAKE DUCT EXTENSION** – An air supply duct extension between the intake hood and unit provides additional separation conforming to NFPA96 for minimum spacing of 10 feet between exhaust and supply fans.

SPECIFICATIONS

Furnish and install as indicated on the plans Romla Model roof mounted, side intake filtered air supply fans as manufactured by Romla Ventilator Company, San Diego, California. Fans shall be of the belt driven, double width, double inlet (DWDI), forward curved centrifugal blower type. The unit's blower assembly shall be mounted on rubber mounts to prevent noise transmission into the building. Motor drives shall be of the machine cast iron type and adjustable for final system balancing. Drives shall be sized for a minimum of 165% of driven horsepower. Belts shall be non-static and oil resistant. Latched top cover shall provide convenient access to motor, k pulleys and belt. Filters shall be one inch washable aluminum filters. Fans shall be tested and rated in accordance with AMCA 211 and are guaranteed by the manufacturer to deliver rated performance.

WARRANTIES

The Romla Ventilator Company warrants this equipment to be free from defects in material and workmanship under normal use and service for a period of one year from date of delivery. During the warranty period if any parts prove to be defective, they will be repaired or replaced free of charge at factory option: If upon receipt of written authorization they are delivered prepaid to the factory. This guarantee does not cover any damage caused by neglect of lubrication, accident or overload, improper installation, nor does it cover the cost of repairs made or attempted outside the factory, without authorization from Romla Ventilator Company. Electric motors are guaranteed only to the extent of the motor manufacturer's warranty. Romla Ventilator Company is not responsible for the cost of removal of the defective product or part, or the installation of the repaired or replaced products or part. Correction of any verified defects by repair or replacement shall constitute fulfillment of this warranty.

DISTRIBUTED BY



ROMLA VENTILATOR COMPANY
 9668 Heinrich Hertz Drive, Unit D
 San Diego, California 92154
 619/946-1224 • Fax 619/946-1227 • www.romlair.com