



ROMLAIR

9668 Heinrich Hertz Dr # D, San Diego, CA 92154
PH. 619-946-1224

MODEL HA, HS, & H HOODED PROPELLER FANS

INSTALLATION AND MAINTENANCE INSTRUCTIONS

SHIPPING INSPECTION

Check unit for any damage upon delivery. Also check to see that accessory items are included. It is important to report any damage to the shipping company immediately.

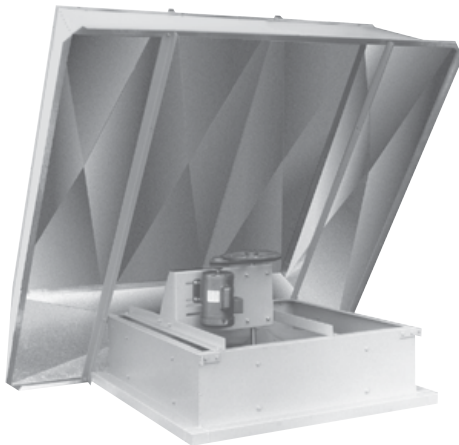
INSTALLATION

Move fan to desired location and fasten securely to the roof curb. Use fasteners to suit construction and material. Fasteners are not supplied by Romla Ventilator Company.

MOTOR AND DRIVE ACCESS

On all sizes the hood easily hinges from the base section of the fan. Remove the two bolts on one side of the fan base where the hood angles are attached.

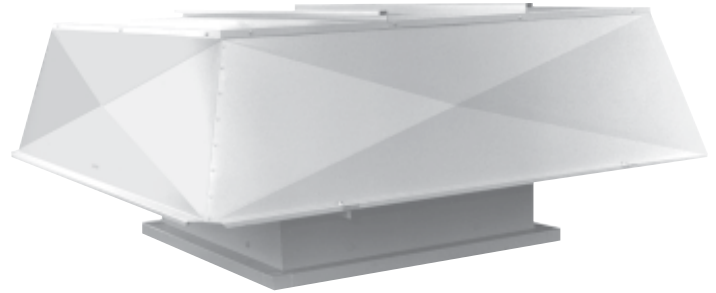
Use caution when working with the hoods. Make sure hoods are safely secured when servicing the fans.



ELECTRICAL

The motor's amperage and voltage rating must be checked for compatibility to the supply voltage prior to final electrical connection.

The electrical supply normally will come up from the roof opening. The conduit will then be secured to a disconnect switch (optional) or directly to the motor junction box. If the wiring has to be routed through the outside enclosure, the wiring is



to be routed through an opening in the unit enclosure which is slightly larger than the conduit fittings. Please note that the opening in the outer enclosure through which the conduit would pass,

Lock off all power sources before unit is wired to power source.

Leave enough slack in the wiring to allow for motor movement when adjusting belt tension.

Disconnect switches are recommended. Place the disconnect switch near the fan in order that the power can be swiftly cut off in case of an emergency, and in order that maintenance personnel are provided complete control of the power source.

PRE START-UP CHECKS

- Lock out all the primary and secondary power sources.
- Inspect fasteners and setscrews, particularly those used for mounting the unit, and tighten if necessary.
- Inspect belt tension and pulley alignment.
- Inspect motor wiring.
- Ensure the belt touches only the pulleys
- Rotate the fan propeller to ensure it does not rub against the venturi.
- Direction of wheel rotation is critical. Reversed rotation will result in poor air performance, motor overloading and possible burnout. Rotation should correspond to the rotation arrow located on the fan propeller.