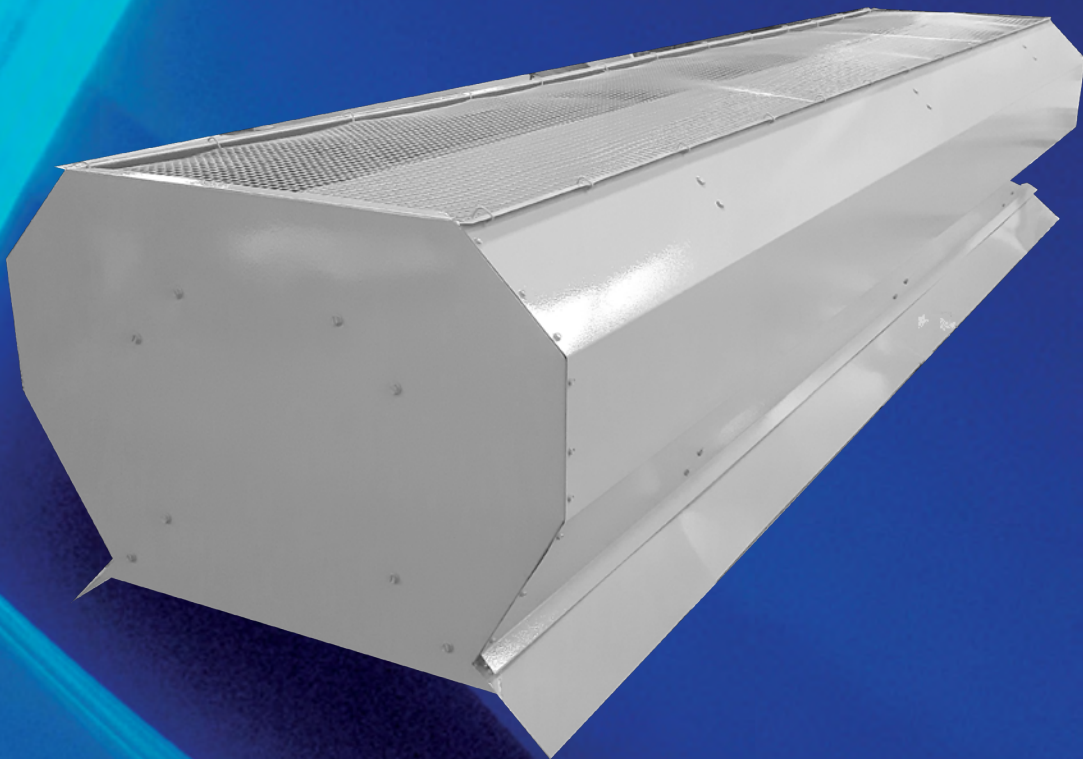


# **ROMLAIR**



## **MODEL RV**

Ridge Ventilator

## MODEL RV RIDGE VENTS

Romlair Model RV ridge ventilators are ideal for steel buildings and other applications requiring an inconspicuous high volume exhaust vent. Install on peaks, flat roofs or on curbs. Model RV comes in standard 10' sections, with end caps for single unit installations. Units can be connected with join plates for continuous ventilation.

All assembly is easily performed from the roof except for joining the damper operator bars.

Units ship fully assembled, but knockdown construction is available for overseas / long distance shipping. Complete drawings and installation instructions are provided for both knockdown and assembled units.

### ACCESSORIES

**DAMPERS** - Optional dampers can be provided as illustrated on the opposite page. Operators of both types 1 and 2 are trouble free, and damper raises and lowers to any position.

**BIRD SCREENS** - Removable bird screens are available at 1 /2" mesh x 19 ga. Galvanized wire or .051 expanded aluminum.

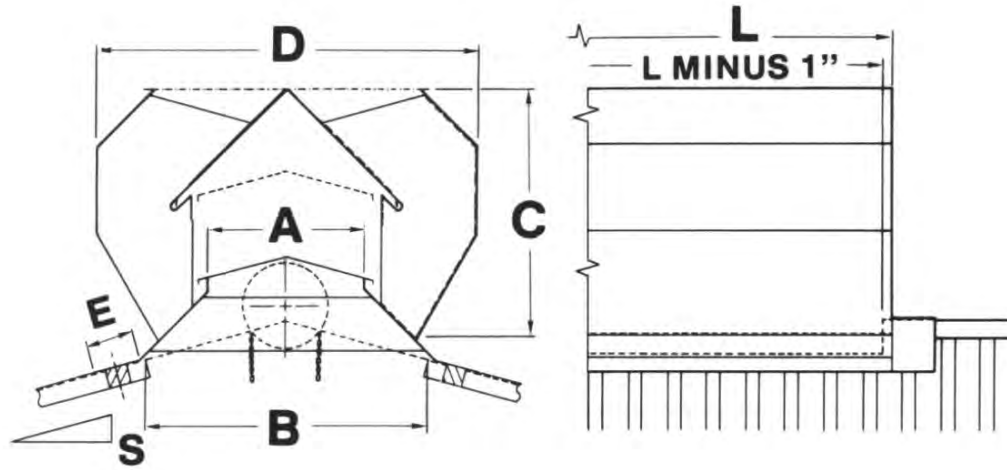
**PAINTING** - Optional high-adhesion white enamel and other colors available at extra cost.



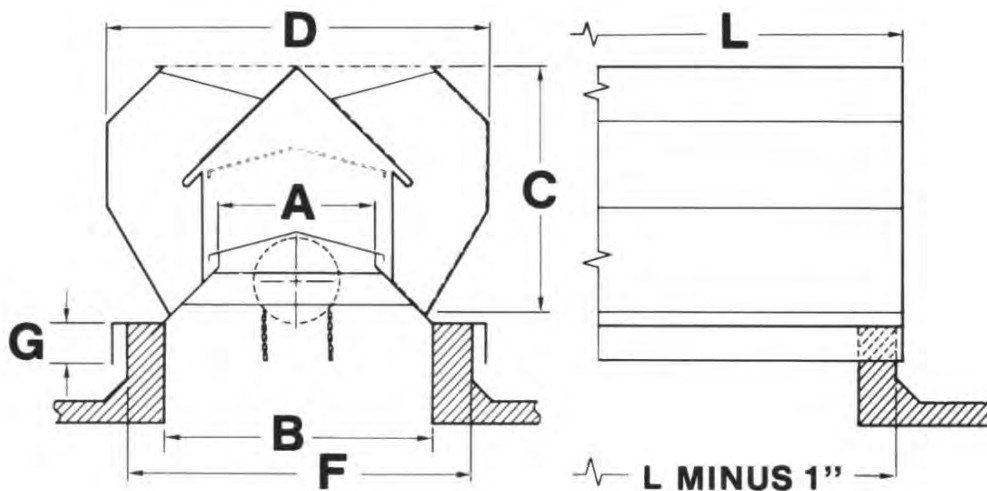
Stack Height	Temperature Difference	RV-4	RV-6	RV-9	RV-12	RV-15	RV-18	RV-24
10'	10	103	155	232	310	387	465	620
	15	108	162	243	325	406	487	650
	20	110	165	248	331	413	496	662
	25	112	167	250	334	417	501	668
	30	115	173	260	347	433	520	694
20'	10	109	166	248	331	414	497	662
	15	114	173	259	345	431	519	690
	20	119	180	270	360	449	540	720
	25	121	185	277	369	461	554	738
	30	128	194	291	368	484	581	776
30'	10	114	173	259	345	431	519	690
	15	120	181	272	363	454	545	726
	20	128	194	291	388	484	582	776
	25	133	201	303	403	505	605	806
	30	140	213	320	427	532	640	854
40'	10	119	180	270	359	449	540	718
	15	128	194	291	388	484	582	776
	20	134	204	306	408	510	612	816
	25	145	220	331	441	552	661	882
	30	154	234	351	468	585	703	936

Romlair maintains a policy of continuous product improvement. Specifications and dimensions are subject to change without notice.

## MODEL OPTIONS



**RIDGE TYPE**



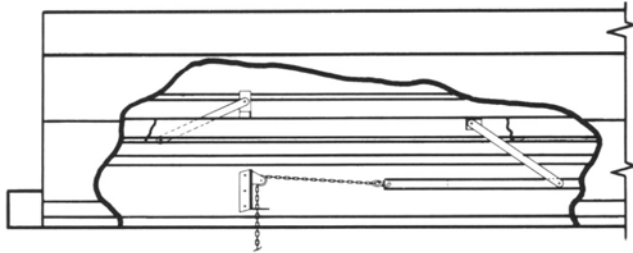
**CURB TYPE**

Model	DIMENSIONS							*GALV. GA
	A	B	C	D	E	F MAX.		
RV-4	4	11 1/8	7	10 3/4	2 7/8	15 1/8	2	24
RV-6	6	13 1/8	10 1/4	15	2 7/8	17 1/8	2	24
RV-9	9	16 1/8	14 1/4	22	2 7/8	20 1/8	2	24
RV-12	12	22 1/2	18 1/4	28 3/4	3 1/4	26 1/2	2	24
RV-15	15	25 5/8	24	36	3	29 5/8	2	22
RV-18	18	35 1/2	30	44	4	43 1/2	3	20/22
RV-24	24	44	38 1/2	58	5	52	3	20/22

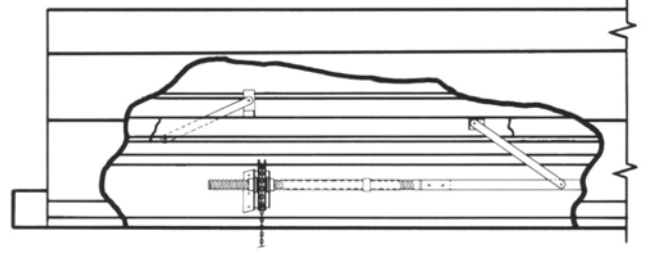
\*Inner support structures are 18 and 20 GA

Romlair maintains a policy of continuous product improvement. Specifications and dimensions are subject to change without notice.

## DAMPER OPERATORS

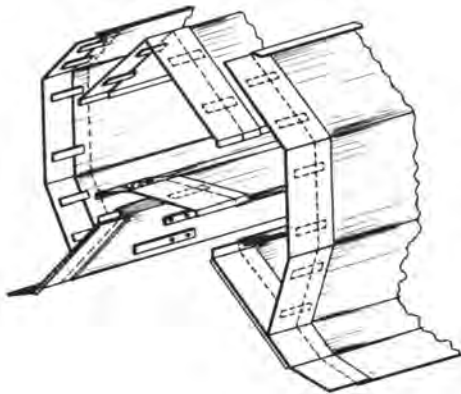


**Type 1 Damper** is a pull to open, release to close operator for single units. 20' chain as standard length and a chain catch is provided. Not to be used for a section more than 10'.



**Type 2 Damper** is for mounting multiple, connected units. The chain sprocket gear operates a threaded lead screw for added leverage. This is required for operating joined sections. Standard chain length is 40' (20' loop).

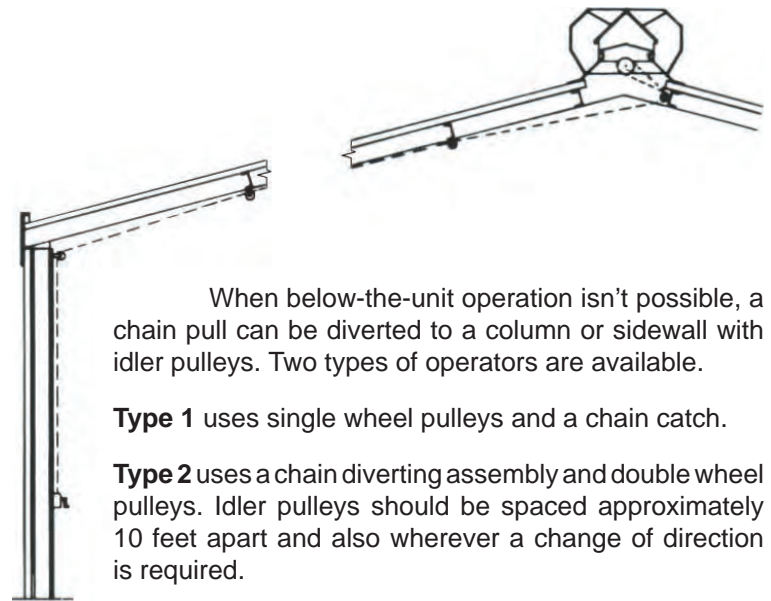
## MULTIPLE UNIT SPLICE



Slip type joint plates enable multiple unit splicing.

This permits sections to telescope together without the need for separate fasteners.

## OPERATOR CHAIN PULL



When below-the-unit operation isn't possible, a chain pull can be diverted to a column or sidewall with idler pulleys. Two types of operators are available.

**Type 1** uses single wheel pulleys and a chain catch.

**Type 2** uses a chain diverting assembly and double wheel pulleys. Idler pulleys should be spaced approximately 10 feet apart and also wherever a change of direction is required.

MAX. LENGTH PER OPERATOR (Type 2 Only)						
RV-4	RV-6	RV-9	RV-12	RV-15	RV-18	RV-24
100'	100'	100'	70'	50'	50'	30'
Weight Per 10' Section (lbs.)						
68	86	108	169	253	294	462