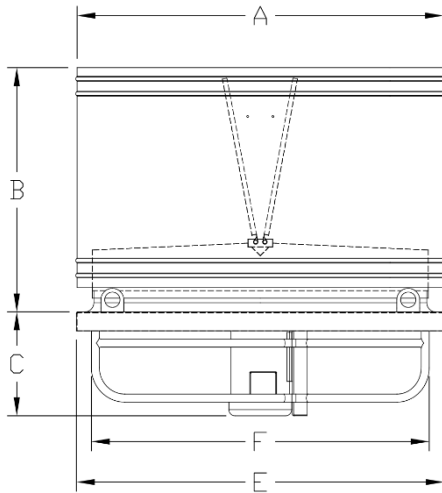


MODEL V OVERVIEW



Project Number:

Project Name:

Customer:

Date:

Product Information

Fan: V Series

Drive: Direct Drive

Finish:

Motor(s):

Prop(s):

FAN SIZE	A	B	C	E	F	STEEL GAUGE		WT (LBS.)
						CURB CAP	WIND BAND	
24	30	22	12	30	24	16 GA	20 GA	134
30	36	29	12	36	30	16 GA	20 GA	220
36	42	30	17	42	36	16 GA	20 GA	348
42	48	33	17	48	42	14 GA	20 GA	359
48	54	38	22	54	48	14 GA	20 GA	708
54	60	40	21	60	54	12 GA	20 GA	825
60	66	44	21	66	60	12 GA	18 GA	931

TAGS	QTY	MODEL	HP	RPM	ELECTRICAL	STATIC PRESSURE	CFM

STANDARD FEATURES

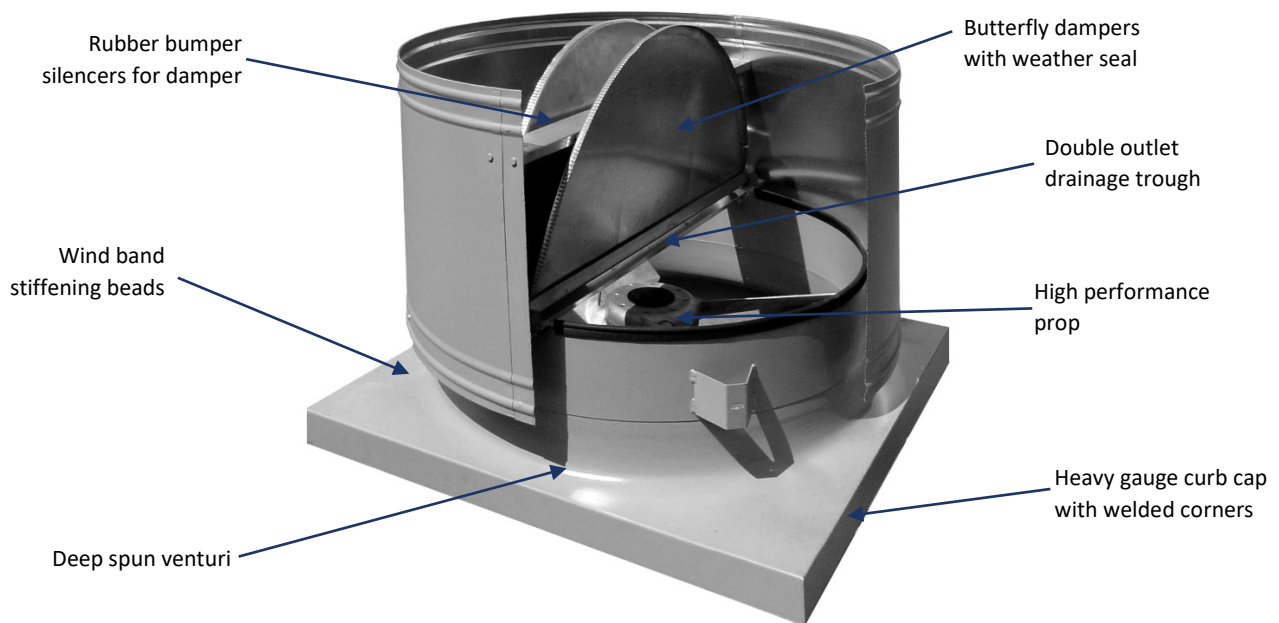
- **High Performance Prop:** Blades are manufactured with custom-selected material for ideal performance and efficiency and mated with a cast aluminum hub.
- **Wind Band:** Constructed of heavy gauge galvanized steel. Easily removable to facilitate easy access to fan components for inspection and service.
- **Butterfly Dampers:** Steel dampers are standard for sizes 24 through 60. Dampers provide weather and backdraft protection when the fan is not in operation.
- **Motor Frame:** The heavy-duty all welded drive frame provides a rigid platform for motor and propeller.
- **Minimal Maintenance Cost:** Maintenance costs are generally lower with direct drive fans since there are no belts or bearings to replace and no pulleys to adjust.
- **Heavy-Duty Motor:** Standard motor selection is heavy duty TEFC. Direct drive motor operation will provide years of trouble-free operation.
- **Deep Spun Venturi:** Utilized for superior strength and higher efficiency.

NOTE: Romla Fans is committed to product improvement and retains the right to change specifications and dimensions at will without prior notification.

MODEL V STANDARDS

Model V roof fans shall be direct drive and designed exclusively for exhaust applications for use in most commercial and industrial buildings. Propellers shall be statically and dynamically balanced. The all-welded motor support structure shall consist of heavy gauge motor plate supported by heavy duty struts, welded to a deep spun orifice for greater airflow efficiency. Housing construction shall be of galvanized steel and be protected by an exterior liquid polyurethane coating.

Wind bands shall be constructed of heavy gauge galvanized steel and beaded for additional strength. Butterfly dampers will be constructed of heavy gauge galvanized steel and include rubber bumpers for quiet damper operation. The weather sealing dampers will include water runoff troughs for drainage and shall provide a tight weather seal when closed. The wind band shall be easily removable to gain access to the fan through the butterfly dampers for equipment maintenance. Guards shall be provided for both inlet and outlet when requested.



WARNING! DO NOT USE IN HAZARDOUS ENVIRONMENTS WHERE THE FAN'S ELECTRICAL SYSTEM COULD IGNITE COMBUSTIBLE OR FLAMMABLE MATERIALS. In those situations, use units specifically built for hazardous environments. Guards must be installed when a fan is within reach of personnel or within seven (7) feet of working level or when deemed advisable for safety.



MODEL V PROJECT INFO & SPECIFICATIONS

Project Number:	Selected Features
Project Name:	Fan: V Series
Customer:	Drive: Direct Drive
Date:	Finish:
	Motor(s):
	Prop(s):

TAGS	QTY	MODEL	HP	RPM	ELECTRICAL	STATIC PRESSURE	CFM

ADDITIONAL OPTIONS

General Accessories

- Roof Curb (see Curb Submittal)
- Inlet Guard (Motor-Side Guard)
- Outlet Guard (Bird Screen)
- Magnetic Damper Latches

Disconnect Switch

- NEMA3R Factory Wired
- NEMA4 Ship Loose
- NEMA4X

Install Accessories

- Custom Support Steel
- Install Hardware

Custom Finish

- Epoxy Coating
- Polyurethane Coating
- Custom:

PRODUCT NOTES

- Fan guards are required when equipment is less than (7) feet above floor or working level per OSHA requirements. Guards are available from Romla Fans or should be provided by installing personnel when deemed necessary.
- Fans are furnished with factory-installed lifting lugs for quick and efficient installation. Consult the product I.O.M. for proper fan hoisting procedures.
- Fans must be installed with remote motor overload protection. Standard fan motors are not provided with inherent overload or overcurrent protection.

WARRANTY

Romla Fans guarantees this equipment to be free of defects in material and workmanship under normal use and service for a period of one year from the date of delivery. Romla Fans must be contacted within the one-year period with a warranty claim and the repair authorized by both parties. The location of warranty repairs, either in-field or at the factory, will be at Romla Fans’ discretion. This guarantee does not cover any damage caused by neglect of lubrication, accidental overload, or improper installation, nor does it cover the cost of repairs made or attempted outside the factory, without written authorization. Romla Fans only guarantees electric motors to the extent of the motor manufacturer’s warranty. Correction of any verified defects by repair or replacement shall constitute fulfillment of this warranty.

NOTE: Romla Fans is committed to product improvement and retains the right to change specifications and dimensions at will without prior notification.