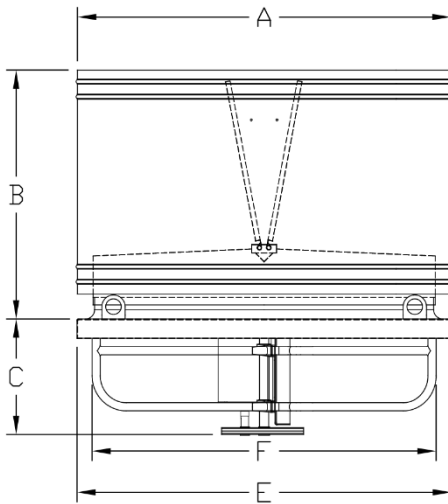


MODEL VB OVERVIEW



Project Number:

Project Name:

Customer:

Date:

Product Information

Fan: VB Series

Drive: Belt Drive

Material: Steel

Finish:

Motor(s):

Prop(s):

FAN SIZE	A	B	C	E	F	STEEL GAUGE		AVG WT (LBS)
						CURB CAP	WIND BAND	
24	30	22	15	30	24	16 GA	20 GA	183
30	36	29	16	36	30	16 GA	20 GA	227
36	42	30	19	42	36	16 GA	20 GA	344
42	48	33	20	48	42	14 GA	20 GA	443
48	54	38	23	54	48	14 GA	20 GA	510
54	60	40	23	60	54	12 GA	20 GA	656
60	66	44	19	66	60	12 GA	18 GA	730

TAGS	QTY	MODEL	HP	RPM	ELECTRICAL	STATIC PRESSURE	AIRFLOW

STANDARD FEATURES

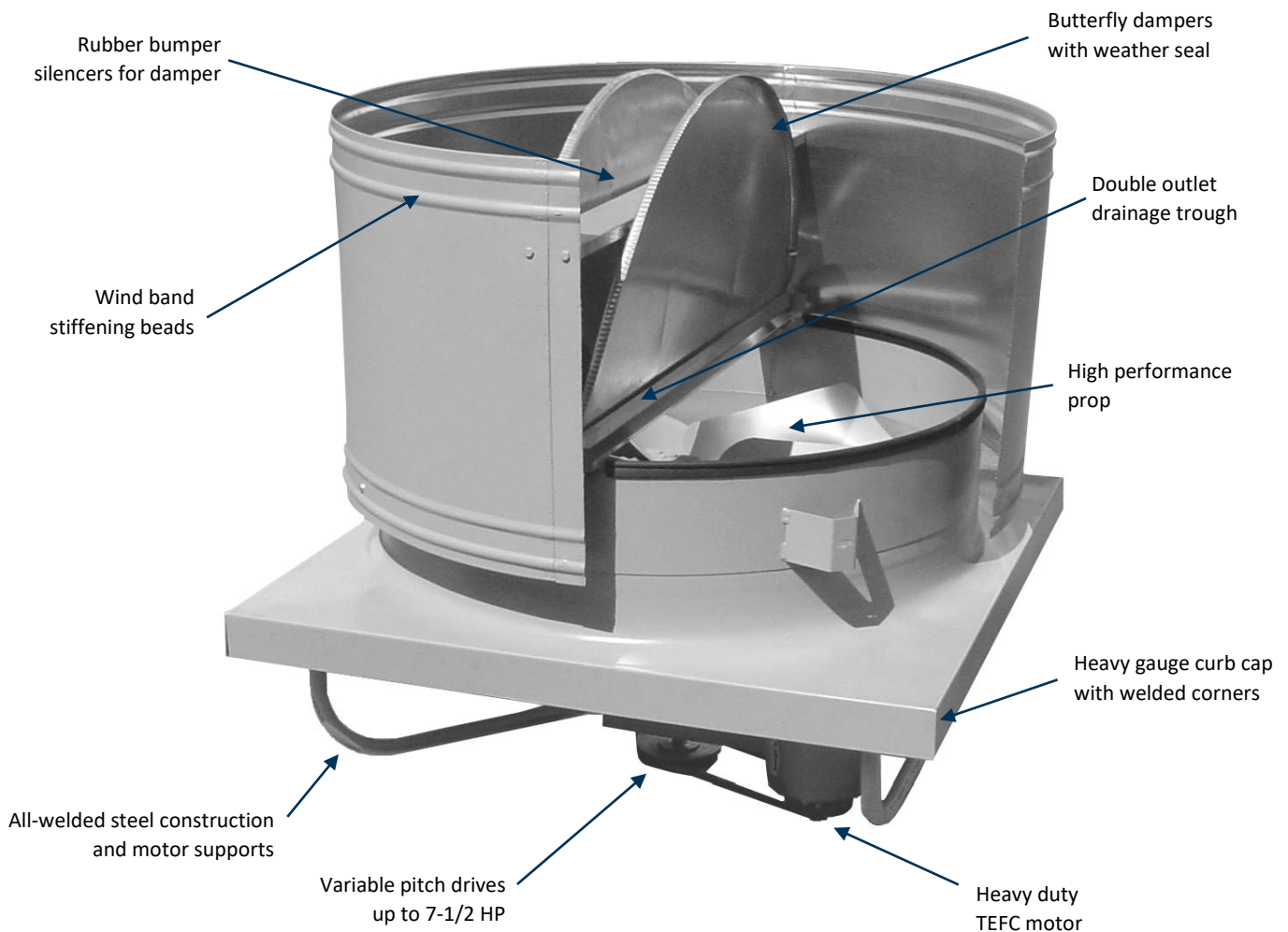
- **High Performance Prop:** Blades are manufactured with custom-selected material for ideal performance and efficiency and mated with a cast aluminum hub.
- **Wind Band:** Constructed of heavy gauge galvanized steel. Easily removable to facilitate easy access to fan components for inspection.
- **Butterfly Dampers:** Steel dampers are standard for sizes 24 through 60. Dampers provide weather and backdraft protection when the fan is not in operation.
- **Drive Frame:** The heavy duty all-welded frame provides a rigid platform for motors, bearings, and drives.
- **Variable Pitch Drives:** Available on fans up to 7 ½ HP. Adjustable for final system RPM. Belts sized for 165% of driven HP.

NOTE: Romla Fans is committed to product improvement and retains the right to change specifications and dimensions at will without prior notification.

MODEL VB STANDARDS

Model VB Roof Fans shall be belt drive and designed exclusively for exhaust applications for use in most commercial and industrial buildings. Propellers shall be statically and dynamically balanced. The all-welded drive frame section shall consist of heavy gauge motor plate supported by heavy duty struts, welded to a deep spun orifice for superior airflow efficiency. Housing construction shall be of galvanized steel and be protected by an exterior polyurethane coating. Fan bearings shall be heavy-duty, grease lubricated, self-aligning pillow block type and shall be selected for a minimum life of 200,000 hours at maximum operating speed. Motor drives up to 7½ HP shall be variable pitch, and all drives shall be designed for 165% of rated horsepower.

Wind bands shall be constructed of heavy gauge galvanized steel and beaded for additional strength. Butterfly dampers will be constructed of heavy gauge galvanized steel and include rubber bumpers for quiet damper operation. The weather sealing dampers will include water runoff troughs for drainage and shall provide a tight weather seal when closed. The wind band shall be easily removable to gain access to the fan through the butterfly dampers for equipment maintenance.



WARNING! DO NOT USE IN HAZARDOUS ENVIRONMENTS WHERE THE FAN'S ELECTRICAL SYSTEM COULD IGNITE COMBUSTIBLE OR FLAMMABLE MATERIALS. In those situations, use units specifically built for hazardous environments. Guards must be installed when a fan is within reach of personnel or within seven (7) feet of working level or when deemed advisable for safety.

MODEL VB PROJECT INFO & SPECIFICATIONS

Project Number:

Project Name:

Customer:

Date:

Selected Features

Fan: VB Series

Drive: Belt Drive

Material: Steel

Finish:

Motor(s):

Prop(s):

TAGS	QTY	MODEL	HP	RPM	ELECTRICAL	STATIC PRESSURE	AIRFLOW

ADDITIONAL OPTIONS

General Accessories:

- Roof Curb (see Curb Submittal)
- Inlet Guard (Motor-Side Guard)
- Outlet Guard (Bird Screen)
- Magnetic Damper Latches

Disconnect Switch:

- NEMA3R Factory Wired
- NEMA4 Ship Loose
- NEMA4X

Installation:

- Custom Support Steel
- Install Hardware

Custom Finish:

- Epoxy Coating
- Polyurethane Coating
- Custom:

PRODUCT NOTES

- Fan guards are required when equipment is less than (7) feet above floor or working level per OSHA requirements. Guards are available from Romla Fans or should be provided by installation personnel when deemed necessary.
- Fans are furnished with factory-installed lifting lugs for quick and efficient installation. Consult the product I.O.M. for the proper fan hoisting procedures.
- Fans must be installed with remote motor overload protection. Standard fan motors are not provided with inherent overload or overcurrent protection.

WARRANTY

Romla Fans guarantees this equipment to be free of defects in material and workmanship under normal use and service for a period of one year from the date of delivery. Romla Fans must be contacted within the one-year period with a warranty claim and the repair authorized by both parties. The location of warranty repairs, either in-field or at the factory, will be at Romla Fans’s discretion. This guarantee does not cover any damage caused by neglect of lubrication, accidental overload, or improper installation, nor does it cover the cost of repairs made or attempted outside the factory, without written authorization. Romla Fans only guarantees electric motors to the extent of the motor manufacturer’s warranty. Correction of any verified defects by repair or replacement shall constitute fulfillment of this warranty.

NOTE: Romla Fans is committed to product improvement and retains the right to change specifications and dimensions at will without prior notification.