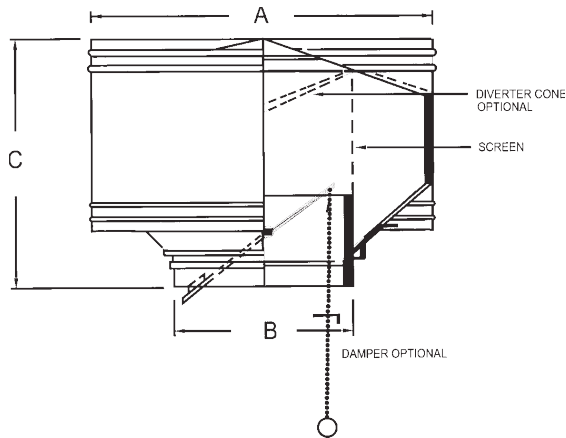


SUBMITTAL



Project Number:

Project Name:

Customer:

Date:

PRODUCT INFORMATION

Submitted By:

Approved By:

Date:

QTY	MODEL	EXHAUST CFM	WIND SPEED	STACK HEIGHT	TEMP. DIFF.	MATERIAL		ACCESSORIES	MARK
						ZINC-ALUM	SS		

STANDARD FEATURES

- **Modern Louvered Design:** Sleek and stylish, preferred by architects.
- **Exhaust Relief or Air Intake Ventilation**
- **Test and Certified:** Conforms to Army Corp of Engineers Bulletin CE220.09 for Gravity Ventilators.
- **Withstand Hurricane Force Winds:** Durable up to 85 Miles Per Hour.
- **Weatherproof and Stormproof:** Under all normal operating conditions.
- **Manufactured from Galvanized Steel:** Conforming to specification QQ-1-716
- **Galvanized Steel Bird Screen Standard:** 1/2" Mesh 19 Gauge

MODEL	A	B	C	GALV GAUGE	SS GAUGE
RS-6	10	6	8-1/2	26	.032
RS-8	13	8	9-1/2	26	.032
RS-10	16	10	11	26	.032
RS-12	19	12	13	24	.032
RS-14	22	14	14	24	.032
RS-16	25-1/2	16	15	24	.032
RS-18	30	18	18-1/2	24	.032
RS-20	32	20	19-1/2	24	.032

MODEL	A	B	C	GALV GAUGE	SS GAUGE
RS-24	38	24	22-1/2	24	.040
RS-30	48	30	24-1/2	22	.040
RS-36	56	36	29	22	.040
RS-42	65-1/2	42	35	20	.050
RS-48	75	48	35	20	.050
RS-54	81	54	41	20	.050
RS-60	90	60	42	18	.050
RS-72	108	72	50	18	.050

ADDITIONAL OPTIONS

- Specialty Finish: Air dry enamel
- Roof Base
- Disc Damper in Throat
- Insect Screen
- Diverter Cone
- Quadrant Operator

NOTE: Romla Fans is committed to product improvement and retains the right to change specifications and dimensions at will without prior notification.