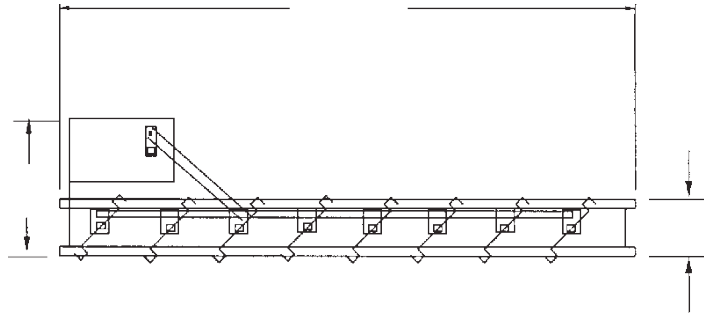


MODEL RVC OVERVIEW

Project Number:

Project Name:

Customer:

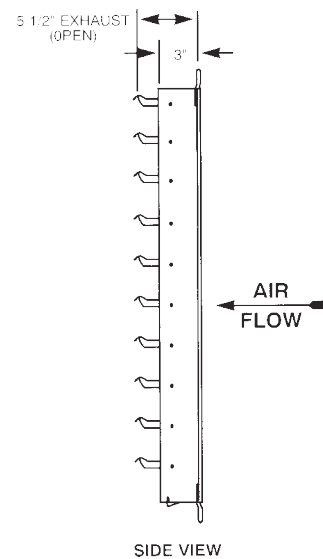


STANDARD FEATURES:

- 5-1/2" x 7/8", 16-gauge galvanized steel hat channel frame
- 16-gauge galvanized steel blades
- 1/2" square plated steel, stub axelse
- Non-metallic copolymer bearings
- Linkage: In-jamb plated steel bar & crank plates w/ stainless steel pivots.
- Stops: 18-gauge galvanized steel at head and seal.
- Mill finish
- Maximum velocity is 3000 FPM on heavy-duty models

ADDITIONAL OPTIONS:

- On-blade linkages
- Oil impregnated bronze bearings
- Stainless Steel construction.
- Seals
 - Vinyl on Blade (-10°F to 150°F)
 - Silicone on Blade (-40° to 350°F)
- Stainless Steel Jamb (-40°F to 350°F)



QTY	MODEL	OPENING A	OPENING B	MOTORIZED	VOLT.	MARKING

NOTE: Romla Fans is committed to product improvement and retains the right to change specifications and dimensions at will without prior notification.