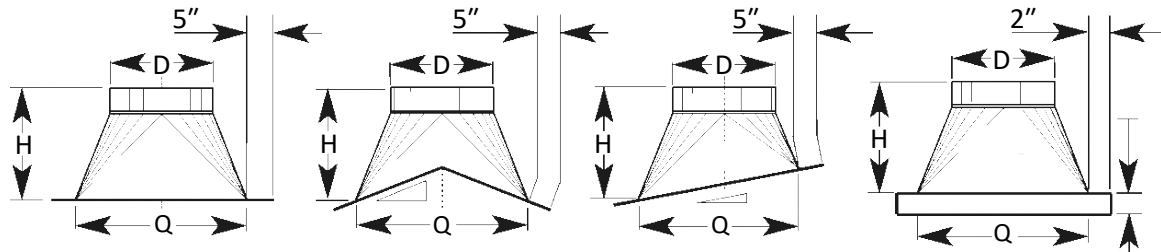


BASE SPECIFICATIONS

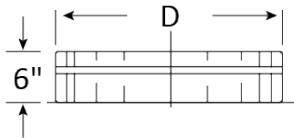
Square-to-round bases are required for turbine and stationary ventilators. Bases are available in slope, ridge, curb, and flat types. Flat collar bases are available at slightly lower costs, however if adaptations must be made, other than flat, it is more economical to use the square to round type.

MODEL B BASES



Base type and roof pitch must be specified when ordering (i.e. B-12 ridge 4" in 12" pitch)

MODEL C BASE



BASES - DIMENSIONS AND GAUGES

Model D	Q. Sq.	Height H	Galv. Gauge	Alum. Gauge
B6	10	6	26	.032
B8	12	6	26	.032
B10	14	7	26	.032
B12	16	7	26	.032
B14	18	8	26	.032
B16	20	8	26	.032
B18	22	9	24	.032
B20	24	9	24	.032
B24	30	11	24	.040
B30	36	13	22	.040
B36	42	15	22	.040
B42	48	15	20	.050
B48	54	15	20	.050
B54	60	18	18	.063
B60	66	19	18	.063
B72	78	21	18	.063